



Care Partners

Depression in Late-Life Initiative

AIMS CENTER
W UNIVERSITY of WASHINGTON
 Psychiatry & Behavioral Sciences

Newsletter #4

December 2018

Save the Date!

Annual Meeting 2019 / September 30th / UC Davis Conference Center Davis, CA

We enjoyed connecting with many of you at the 2018 annual meeting and look forward to seeing you again at the upcoming meeting on September 30, 2019. Please watch for a calendar invite to hold the date. Additional registration information will be sent after the new year.



Pictured: 2018 Annual Meeting at the Long Beach Marriott on September 14, 2018

Webinars and Web-Based Discussions Schedule:

Thank you to all who joined us on November 8th for the first Web-Based Discussion of Phase 2, Working with Older Adults. The Web-Based Discussions will resume on **February 7, 2019** on the topic of Working with Older Men. Please see below for additional Web-Based Discussions planned through May 2020. The topics and times were derived from the REDCap survey results – thank you for your feedback and suggestions! A few additional topics were of interest to a subset of sites and will be covered in smaller Learning Community Calls. The first of these calls will cover Home Visits and will occur in mid-January 2019. Please let us know if you are interested in participating or if you have other topics of interest that can be supported through a Learning Community Call between invited sites.

Also, thank you to all who joined us on December 19, 2018 for our first of several Training Webinars of Phase 2, Depression Treatment Options for Older Adults. An additional two Training Webinars will be held **January 30th** and **March 13th, 2019**.

Please watch for calendar invites to hold the below dates. Additional details on format and attendees can be found on the next page. These details and the below scheduled can also be found on the Care Partners website: [webinars-case-calls](#)

Call Type	Date/Time (PST)	Topic
Training Webinar	December 19, 2019; 8-9am	Depression Treatment Options for Older Adults
	January 30, 2019; 9-10am	Goal Setting/Treatment Planning
	March 13, 2019; 9-10am	Maximizing Activation
Web-Based Discussion	February 7, 2019; 9-10am	Working with Older Men
	May 8, 2019; 9-10am	Rigid Personalities/Trauma History
	August 7, 2019; 8-9am	Stigma/Cultural Competence
	November 13, 2019; 8-9am	Complex Comorbidities/Chronic Illnesses and Alcohol Use
	February 12, 2020; 9-10am	Enhanced Case Management
Learning Community Call	May 13, 2020; 8-9am	Elder Abuse
	TBD - ~mid-January 2019	Home Visits

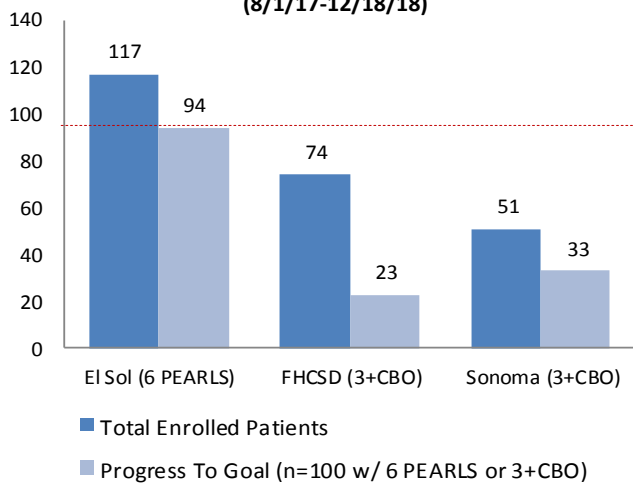
Progress on Program Goals:



Coaching and community learning opportunities are provided to support sites in reaching their project goals. Please see below for current tracking of these important metrics for cohort 1 sites (*Phase 2 only*). Progress for the cohort 2 sites will be shared in the next newsletter as they are just beginning enrollment.

The figure below provides total patient enrollment thus far in Phase 2 (*dark blue bars*), 8/1/7-12/18/18. The light blue bars illustrate progress toward goal of 100 enrolled patients receiving either 6 PEARLS sessions (*El Sol goal*) or 3+ CBO sessions (*goal for other sites*).

**Cohort 1: Patient Enrollment and Progress to Goal
(8/1/17-12/18/18)**



Implementation Resource



Spotlight:

We wanted to highlight several resources that can be found on the Care Partners Website. These in particular may be helpful to cohort 2 as they work on implementation and launching care.

- ◆ [Call Summary List](#) - Provides summary of scheduled calls, required/optional attendees and call format.
- ◆ [CMTS Required Fields](#) - CMTS has required fields in order to complete notes and the Care Partners project has additional fields required for evaluation.
- ◆ [Team Communication](#) - PCPs are an important part of the team and communication between Primary Care and Behavioral Health is important for patient engagement. Use these tools to build team communication.
- ◆ [Patient and Family Engagement and Retention](#) - Visit the webinar list on the Care Partners website for slides and a recording of the November 18, 2015 webinar on this topic. Many additional topics are available on the website as well.
- ◆ [Pre-Launch Checklist](#) - Revisit the Pre-Launch Checklist for resource links and project items that may need to be sent to the technical assistance team at UW.

CMTS Top Tips:

- If you're unable to log in to your account, it may be disabled from incorrect passwords being entered or too much time elapsed since your last log in. You can contact your site's *Account Administrator* to regain access. If you continue to have difficulty, please reach out to Kat for additional assistance.
- Not able to create a note for a patient? Only one person can enter in information for a patient at a time. You should contact the team member listed on the error message to continue.
- **Pro Tip**—Look for the ToolTip icon for helpful information when navigating CMTS.

Check out the [CMTS FAQ](#) on the Care Partners website for more tips and commonly asked questions. And feel free to reach out to the UW team with any additional question on CMTS.

