



# Care Partners

*Depression in Late-Life Initiative*

**AIMS CENTER**  
UNIVERSITY of WASHINGTON  
Psychiatry & Behavioral Sciences

Newsletter #3

August 2018

## Important Updates:

### Annual Meeting

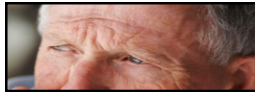
September 14th, Long Beach, CA



**Meeting Agenda (Draft):** We are currently working to finalize the agenda for this year's Annual Meeting. Click [here](#) to view. We will be kicking off the meeting at 8am PST with sign-in and breakfast. Looking forward to seeing many of you there!

### Web-Based Discussion #1

November 8th, 9am-10am PST



**Working with Older Adults:** Our first web-based learning community discussion will focus on working with older adults. Please be ready to join this call with your computer's camera turned on. We'll hold a short presentation and follow with great discussion with some of our practice coaches. We also look forward to hearing about your preferred topics for future discussions. We're preparing a list of topics for feedback but welcome any topics that come to mind for you as well—now or in the future.

## Cohort 2 Site Spotlight

### KAISER PERMANENTE SOUTHERN CALIFORNIA AND HEALTHY AFRICAN AMERICAN FAMILIES II

Our goal is to establish a collaborative, sustainable working relationship between Kaiser Permanente Southern California (KPSC), the largest healthcare provider in Southern California, and Healthy African American Families (HAAF) II, the lead community agency for the Community Partners in Care (CPIC) initiative which helped establish the evidence base for a multi-sector, community-engagement-based approach to collaborative care for depression. There are few resources within the KPSC healthcare system for social and non-medical needs of patients in our existing collaborative depression care program. Many of these patients, especially older adults, struggle with transportation, insurance coverage for medications, social isolation, and poor nutrition. The KPSC collaborative depression care teams need more comprehensive, systematic, and reliable connections to community-based organizations that could meet these needs.



### DEPRESSION & BIPOLAR SUPPORT ALLIANCE AND PROVIDENCE/FACEY

The Depression and Bipolar Support Alliance (DBSA), a peer-directed national organization dedicated to improving the lives of people living with mood disorders, is partnering with Providence St. Joseph Health at the Facey Medical Group's Mission Hills Clinic to pilot and evaluate effectiveness of the Senior Strength Program. Senior Strength will enhance collaborative care and improve treatment outcomes for older adults living with depression through use of primary care screening for depression, peer-delivered services in the community, use of self-guided wellness tools and supports, and clinician training.



## NEIGHBORHOOD HEALTHCARE AND INTERFAITH COMMUNITY SERVICES



Neighborhood Healthcare (NHcare) has 12 integrated behavioral health primary care clinics located throughout San Diego and Riverside counties; one behavioral health department, and a chiropractic clinic. NHcare is proud to collaborate with its long-term partner, Interfaith Community Services, located in Escondido, which is in North Inland San Diego County.



NHcare enhanced its integrated healthcare model by including social determinants of health (SDOH) assessments, navigation, and referrals to community based organizations to improve whole person centered care. NHcare further enhanced this model to include a formal collaborative care model with its partner, Interfaith Community Services. Both agencies will now assess for SDOH, depression (PHQ9), alcohol use (AUDIT), and drug use (DAST). These assessments will be documented and tracked to provide inter-agency referrals to address shared patient needs (medical, behavioral health, essential social needs). Both agencies will maintain CMTS and a new senior registry to track patient progress, compliance with treatment plan, and adjustments to treatment plan. Our collective goal is to focus on seniors aged 65 and older to screen at least 1,000 seniors for depression; 500 seniors for SDOH; and develop treatment plans for 500 seniors.

## UNIVERSITY OF CALIFORNIA, DAVIS DEPARTMENT OF PSYCHIATRY AND BEHAVIORAL SCIENCES

The UC Davis integrated behavioral health team is looking forward to participating in Phase 2 of the Care Partners initiative at Midtown and Elk Grove Primary Care Network clinics. This team will enhance the collaborative care model for late-life depression by systemically engaging family members in specific collaborative care tasks. Care managers, consultant psychiatrists, and PCPs will communicate regularly to help engage family care partners in patient education, symptom monitoring and treatment support to facilitate improved and patient-centered depression care. This team also looks forward to the practice coaching and learning community provided by the University of Washington and UC Davis teams.



## CMTS Updates

Thank you to all of the new CMTS users who joined the CMTS Q & A on August 29th! If you weren't able to attend, click [here](#) to view the recording.

Also as a reminder, when inputting patient data into the registry, this project has specific evaluation requirements. Check out the CMTS Required Fields on the Care Partners website for more details: <https://aims.uw.edu/care-partners/content/cmts-required-fields>. You also can reach out to Kat James or your practice coaches with questions on these CMTS Required Fields.

